



DEPARTMENT OF THE NAVY

NAVAL AIR STATION
11001 D STREET SUITE 101
CORPUS CHRISTI, TX 78419

5090
Ser N00/265

OCT 04 2019

From: Commanding Officer, Naval Air Station Corpus Christi
To: Naval Air Station Corpus Christi Parents and Staff

Subj: BUILDING 1782 CHILD DEVELOPMENT CENTER AND OUTDOOR PLAY
AREAS DRINKING WATER

Encl: (1) Additional Resources for Lead in Priority Areas
(2) Complete Test Results of all Locations
(3) Maps of CDC and Outdoor Play Areas

The Navy is committed to maintaining safe drinking water on its installations. City water supplied to the Navy and the Navy's water distribution system is regularly tested and is in compliance with the Safe Drinking Water Act. Because lead exposure is a particular concern for children, and lead may be added to drinking water through the pipes, fittings, solder, and fixtures inside a building, the Environmental Protection Agency (EPA) recommends, but does not mandate, that we test the lead content of drinking water in priority areas such as youth centers (YCs), child development group homes (CDGHs), child development centers (CDCs), and outdoor play areas (OPAs). The Navy has adopted the recommendation as policy.

Navy environmental personnel conducted lead testing at the NAS Corpus Christi CDC Outdoor Play Areas in accordance with Navy and EPA guidelines. Samples from various locations at the CDC and the OPAs were sent to Advanced Environmental Laboratories (a state certified laboratory) for analysis.

At the NAS Corpus Christi CDC, YC and the OPAs, 47 outlets used for drinking, cooking, and washing were tested. Out of 51 samples collected, 4 water outlets initially tested above the Navy Policy recommended screening level for lead in drinking water in schools and childcare centers of 15 parts per billion (ppb) based on test results dated 6 June 2019.

The four outlets with lead level higher than the 15 ppb screening were:

1. Building 1782, Child Development Center, Low Handwash sink in the Starfish Classroom 122. Result was 150 ppb.
2. Outdoor Play Area - Ball Field Bravo, Hose spigot. Result was 16 ppb.
3. Outdoor Play Area - Waldron Sports Field, Hose spigot. Result was 16 ppb.
4. Outdoor Play Area - Waldron Sports Field, Hose spigot. Result was 16 ppb.

Subj: BUILDING 1782 CHILD DEVELOPMENT CENTER AND OUTDOOR PLAY
AREAS DRINKING WATER

After receiving the test results on 6 June 2019, we immediately took these water sources out of service. Due to enrollment numbers and teachers' preference, the children in the Starfish Classroom 122 of Building 1782 CDC relocated to the Seahorse Classroom 123 on 3 June 2019. Prior to 3 June 2019 the children and teachers in the Starfish Classroom 122 did not use the low hand wash sink in the bathroom, not even for hand washing since 9 October 2018. Likewise, the hose spigots at the outdoor play areas are seldom used.

We performed follow up sampling on 11 June 2019 to determine the source of the lead. All four fixtures have been replaced and final testing was conducted on 5 September 2019. All results were at or below the 15 ppb screening level and are returned to service.

Additional resources that you may find informative are provided in Enclosure 1. The complete test results and locations of the sampled sites are enclosed in Enclosures 2 and 3, respectively.

Updated NAS Corpus Christi water quality reports and notifications are available at:
https://www.cnic.navy.mil/regions/cnrse/installations/nas_corpus_christi/om/environmental_support/drinking_water.html

If you have any health questions or concerns, I encourage you to contact the Naval Health Clinic Corpus Christi Preventative Medicine Department Head, LTJG Lopez Coronado, at 361-961-3474. For all other inquiries, please contact my Public Affairs Officer, Fifi Kieschnick, at 361-961-2674.

I am committed to the safety and health of all personnel and family members using our facilities.

Sincerely,



C. C. JASON
Captain, U.S. Navy
Commanding Officer

Copy to:
CNIC N45
NAVFAC N45

Additional Resources for Lead in Priority Areas

EPA (lead in drinking water in schools and day care centers)

<https://www.epa.gov/dwreginfo/lead-drinking-water-schools-and-child-care-facilities>

Annual water quality report at NAS Corpus Christi:

https://www.cnic.navy.mil/regions/cnrse/om/environmental_support/water_quality_information.html

NAS Corpus Christi Lead in Priority Areas (LIPA) sampling program:

https://www.cnic.navy.mil/regions/cnrse/om/environmental_support/water_quality_information/lead_in_priority_area_sampling_program/NASCorpusChristi.html

NAS Corpus Christi water quality reports and notifications:

https://www.cnic.navy.mil/regions/cnrse/installations/nas_corpus_christi/om/environmental_support/drinking_water.html

Drinking water taste, odor, and color:

<https://www.epa.gov/dwstandardsregulations/secondary-drinking-water-standards-guidancenuisance-chemicals>

Priority Areas Lead Testing and Corrective Actions May 2019
NAS CORPUS CHRISTI Child Development Center Building 1782

Table 1. Summary of Results

SAMPLING LOCATION DESCRIPTION			INITIAL SAMPLING RESULTS			RE-SAMPLING RESULTS			CORRECTIVE ACTIONS	POST REMEDIATION SAMPLING RESULTS	
CATEGORY Water Intended For:	SAMPLE ID	Outlet Description	Recommended Level = 15 ppb							Description	Recommended Level = 15 ppb
			First Draw (ppb)	Retest required?	Date Fixture Secured? (See Note 1)	Water Fountain 15 min. Follow up Flush Sample - Collected day before First Draw Sampling (ppb)	First Draw (ppb)	Follow up Flush - Collected 30 seconds after First Draw Sampling (ppb)	First Draw (ppb) (See note 2)		Follow up Flush - Collected 30 seconds after First Draw Sampling (ppb)
SAMPLING DATE			5/16/2019			mm/dd/yyyy	6/13/2019	6/13/2019		9/5/2019	
RESULTS DATE			6/4/2019			mm/dd/yyyy	6/19/2019	6/19/2019		9/10/2019	
DRINKING	CC-1782-HALL-WFC-FD (BLDG 1782-1)	Fountain by check-in desk - Water fountain	Non Detect	NO	N/A	N/A	N/A	N/A		N/A	N/A
DRINKING	CC-1782-PLAY-WFBA-FD (BLDG 1782-4)	Fountain by outdoor play area on west side of building - Outside water fountain	6.8	NO	N/A	N/A	N/A	N/A		N/A	N/A
DRINKING	CC-1782-PLAY-WFBB-FD (BLDG 1782-5)	Fountain by outdoor play area on south side of building - Outside water fountain	4.1	NO	N/A	N/A	N/A	N/A		N/A	N/A
DRINKING	CC-1782-HALL-WFC-B-FD (BLDG 1782-7)	Water fountain outside Starfish Room - Water fountain on left		NO	N/A	N/A	N/A	N/A	Could Not Locate	N/A	N/A
DRINKING	CC-1782-HALL-WFC-C-FD (BLDG 1782-8)	Water fountain outside Starfish Room - Water fountain on right		NO	N/A	N/A	N/A	N/A	Could Not Locate	N/A	N/A
DRINKING	CC-1782-HALL-WFC-D-FD (BLDG 1782-11)	Water Fountain by Unisex Restrooms, Single Water Fountain	Non Detect								
COOKING	CC-1782-RM110-LOUNGE-K-FD (BLDG 1782-3)	Food prep sink in break room - Kitchen prep sink	2.1	NO	N/A	N/A	N/A	N/A		N/A	N/A
COOKING	CC-1782-RM125-K-K-FD (BLDG 1782-21)	Kitchen - Shared kitchen between Guppie and Seahorse rooms	Non Detect	NO	N/A	N/A	N/A	N/A		N/A	N/A
COOKING	CC-1782-RM111-K-K-FD (BLDG 1782-26)	Kitchen - Kitchen prep sink	Non Detect	NO	N/A	N/A	N/A	N/A		N/A	N/A
WASHING	CC-1782-RM107-BATH-UNISEX-HHW-FD (BLDG 1782-2)	Bathroom by reception/check-in desk - Bathroom sink	Non Detect	NO	N/A	N/A	N/A	N/A		N/A	N/A
WASHING	CC-1782-PLAY-HOSE-FD (BLDG 1782-6)	Hose spigot by outdoor play area on south side of building - Hose bib	4.9	NO	N/A	N/A	N/A	N/A		N/A	N/A
WASHING	CC-1782-RM103-BATH-UNISEX-HHW-FD (BLDG 1782-9)	Bathroom next to offices - Bathroom sink	0.72	NO	N/A	N/A	N/A	N/A		N/A	N/A

Priority Areas Lead Testing and Corrective Actions May 2019
NAS CORPUS CHRISTI Child Development Center Building 1782

SAMPLING LOCATION DESCRIPTION			INITIAL SAMPLING RESULTS			RE-SAMPLING RESULTS			CORRECTIVE ACTIONS	POST REMEDIATION SAMPLING RESULTS	
			CATEGORY Water Intended For:	SAMPLE ID	Outlet Description	Recommended Level = 15 ppb					
First Draw (ppb)	Retest required?	Date Fixture Secured? (See Note 1)				Water Fountain 15 min. Follow up Flush Sample - Collected day before First Draw Sampling (ppb)	First Draw (ppb)	Follow up Flush - Collected 30 seconds after First Draw Sampling (ppb)	Description	First Draw (ppb) (See note 2)	Follow up Flush - Collected 30 seconds after First Draw Sampling (ppb)
SAMPLING DATE			5/16/2019			mm/dd/yyyy	6/13/2019	6/13/2019		9/5/2019	
RESULTS DATE			6/4/2019			mm/dd/yyyy	6/19/2019	6/19/2019		9/10/2019	
WASHING	CC-1782-RM104-BATH-UNISEX-HHW-FD (BLDG 1782-10)	Bathroom across back of Goldfish Room - Bathroom sink	2.6	NO	N/A	N/A	N/A	N/A		N/A	N/A
WASHING	CC-1782-RM116-RM-LHWA-FD (BLDG 1782-12)	Stingray Room - Low hand wash sink	Non Detect	NO	N/A	N/A	N/A	N/A		N/A	N/A
WASHING	CC-1782-RM116-RM-LHWB-FD (BLDG 1782-13)	Stingray Room - Low hand wash sink	Non Detect	NO	N/A	N/A	N/A	N/A		N/A	N/A
WASHING	CC-1782-RM116-RM-LHWC-FD (BLDG 1782-14)	Stingray Room - Low hand wash sink	Non Detect	NO	N/A	N/A	N/A	N/A		N/A	N/A
WASHING	CC-1782-RM122-RM-LHWA-FD (BLDG 1782-15)	Starfish Room - Low hand wash sink	Non Detect	NO	N/A	N/A	N/A	N/A		N/A	N/A
WASHING	CC-1782-RM122-RM-LHWB-FD (BLDG 1782-16)	Starfish Room - Low hand wash sink	150	Yes	6/5/2019	N/A	6.8	1.0	Faucet replaced on 7/26/19.	1.7	N/A
WASHING	CC-1782-RM122-RM-LHWC-FD (BLDG 1782-17)	Starfish Room - Low hand wash sink	7.8	NO	N/A	N/A	N/A	N/A		N/A	N/A
WASHING	CC-1782-RM127-RM-LHW-FD (BLDG 1782-18)	Guppie Room - Shared washroom between Guppie and Seahorse rooms	6.8	NO	N/A	N/A	N/A	N/A		N/A	N/A
WASHING	CC-1782-RM123-RM-LHW-FD (BLDG 1782-19)	Seahorse Room - Shared washroom between Guppie and Seahorse rooms	2.8	NO	N/A	N/A	N/A	N/A		N/A	N/A
WASHING	CC-1782-RM123-RM-HHW-FD (BLDG 1782-20)	Seahorse Room - Low hand wash sink	Non Detect	NO	N/A	N/A	N/A	N/A		N/A	N/A
WASHING	CC-1782-RM127-RM-HHW-FD (BLDG 1782-22)	Guppie Room - High hand wash sink	Non Detect	NO	N/A	N/A	N/A	N/A		N/A	N/A

Priority Areas Lead Testing and Corrective Actions May 2019
 NAS CORPUS CHRISTI Child Development Center Building 1782

SAMPLING LOCATION DESCRIPTION			INITIAL SAMPLING RESULTS			RE-SAMPLING RESULTS			CORRECTIVE ACTIONS	POST REMEDIATION SAMPLING RESULTS	
CATEGORY Water Intended For:	SAMPLE ID	Outlet Description	Recommended Level = 15 ppb							Description	Recommended Level = 15 ppb
			First Draw (ppb)	Retest required?	Date Fixture Secured? (See Note 1)	Water Fountain 15 min. Follow up Flush Sample - Collected day before First Draw Sampling (ppb)	First Draw (ppb)	Follow up Flush - Collected 30 seconds after First Draw Sampling (ppb)	First Draw (ppb) (See note 2)		Follow up Flush - Collected 30 seconds after First Draw Sampling (ppb)
SAMPLING DATE			5/16/2019			mm/dd/yyyy	6/13/2019	6/13/2019		9/5/2019	
RESULTS DATE			6/4/2019			mm/dd/yyyy	6/19/2019	6/19/2019		9/10/2019	
WASHING	CC-1782-RM115-RM-LHWA-FD (BLDG 1782-23)	Goldfish Room - Low hand wash sink	1.1	NO	N/A	N/A	N/A	N/A		N/A	N/A
WASHING	CC-1782-RM115-RM-LHWB-FD (BLDG 1782-24)	Goldfish Room - Low hand wash sink	0.94	NO	N/A	N/A	N/A	N/A		N/A	N/A
WASHING	CC-1782-RM115-RM-LHWC-FD (BLDG 1782-25)	Goldfish Room - Low hand wash sink	Non Detect	NO	N/A	N/A	N/A	N/A		N/A	N/A

Notes:

¹ Affected outlet was immediately secured after receiving verbal communication from the lab on results exceeding the recommended level of 15 ppb.

² Post-remediation sampling was conducted on 9/5/19 and final results did not exceed recommended level of 15 ppb.

Priority Areas Lead Testing and Corrective Actions May 2019
NAS CORPUS CHRISTI Child Development Center Building 1782

SAMPLING LOCATION DESCRIPTION			INITIAL SAMPLING RESULTS		RE-SAMPLING RESULTS			CORRECTIVE ACTIONS	POST REMEDIATION SAMPLING RESULTS	
CATEGORY Water Intended For:	SAMPLE ID	Outlet Description	Recommended Level = 15 ppb						Description	Recommended Level = 15 ppb
			First Draw (ppb)	Retest required?	Date Fixture Secured? (See Note 1)	Water Fountain 15 min. Follow up Flush Sample - Collected day before First Draw Sampling (ppb)	First Draw (ppb)	Follow up Flush - Collected 30 seconds after First Draw Sampling (ppb)		First Draw (ppb) (See note 2)
SAMPLING DATE			5/16/2019			mm/dd/yyyy	6/13/2019	6/13/2019	9/5/2019	
RESULTS DATE			6/4/2019			mm/dd/yyyy	6/19/2019	6/19/2019	9/10/2019	

Table 2. Summary Statistics

CATEGORY	INITIAL SAMPLING RESULTS	RE-SAMPLING RESULTS			POST REMEDIATION RESULTS
	Recommended Level = 15 ppb				
	First Draw (ppb)	Water Fountain Follow up Flush Sample - Collected day before First Draw Sampling (ppb)	First Draw (ppb)	Follow up Flush - Collected 30 seconds after First Draw Sampling (ppb)	First Draw (ppb)
Total Drinking	4	0	0	0	0
Total Drinking > 15 ppb	0	0	0	0	0
Total Cook/Brush	3	0	0	0	0
Total Cook/Brush > 15 ppb	0	0	0	0	0
Total Washing	17	0	1	1	1
Total Washing > 15 ppb	1	0	0	0	0
Total Samples	24	0	1	1	1
Total Samples > 15 ppb	1	0	0	0	0

Priority Areas Lead Testing and Corrective Actions May 2019
NAS CORPUS CHRISTI Youth Center Building 1756

Table 1. Summary of Results

SAMPLING LOCATION DESCRIPTION			INITIAL SAMPLING RESULTS			RE-SAMPLING RESULTS			CORRECTIVE ACTIONS	POST REMEDIATION SAMPLING RESULTS	
CATEGORY Water Intended For:	SAMPLE ID	Outlet Description	Recommended Level = 15 ppb							Recommended Level = 15 ppb	
			First Draw (ppb)	Retest required?	Date Fixture Secured? (See Note 1)	Water Fountain 15 min. Follow up Flush Sample - Collected day before First Draw Sampling (ppb)	First Draw (ppb)	Follow up Flush - Collected 30 seconds after First Draw Sampling (ppb)	Description	First Draw (ppb) (See note 2)	Follow up Flush - Collected 30 seconds after First Draw Sampling (ppb)
SAMPLING DATE			5/16/2019			mm/dd/yyyy	mm/dd/yyyy	mm/dd/yyyy		mm/dd/yyyy	
RESULTS DATE			6/5/2019			mm/dd/yyyy	mm/dd/yyyy	mm/dd/yyyy		mm/dd/yyyy	
DRINKING	CC-1756-HALL-WFC-FD (BLDG 1756-1)	Fountain by check-in desk - Water Fountain	Non Detect	NO	N/A	N/A	N/A	N/A		N/A	N/A
DRINKING	CC-1756-PLAY-WFC-FD (BLDG 1756-2)	Fountain in gym - Water Fountain	Non Detect	NO	N/A	N/A	N/A	N/A		N/A	N/A
COOKING	CC-1756-K-K-FD (BLDG 1756-3)	Sink in kitchen - Kitchen Sink	1.1	NO	N/A	N/A	N/A	N/A		N/A	N/A
WASHING	CC-1756-BATH-M-MS-HHWA-FD (BLDG 1756-4)	Mens Room, Motion Sensor	Non Detect	NO	N/A	N/A	N/A	N/A		N/A	N/A
WASHING	CC-1756-BATH-M-MS-HHWB-FD (BLDG 1756-5)	Mens Room, Motion Sensor	1.2	No	N/A	N/A	N/A	N/A		N/A	N/A
WASHING	CC-1756-BATH-W-MS-HHWA-FD (BLDG 1756-6)	Womens Room, Motion Sensor	2.5	No	N/A	N/A	N/A	N/A		N/A	N/A
WASHING	CC-1756-BATH-W-MS-HHWB-FD (BLDG 1756-7)	Womens Room, Motion Sensor	2.7	No	N/A	N/A	N/A	N/A		N/A	N/A

Priority Areas Lead Testing and Corrective Actions May 2019
NAS CORPUS CHRISTI Youth Center Building 1756

SAMPLING LOCATION DESCRIPTION			INITIAL SAMPLING RESULTS		RE-SAMPLING RESULTS			CORRECTIVE ACTIONS	POST REMEDIATION SAMPLING RESULTS	
CATEGORY Water Intended For:	SAMPLE ID	Outlet Description	Recommended Level = 15 ppb						Recommended Level = 15 ppb	
			First Draw (ppb)	Retest required?	Date Fixture Secured? (See Note 1)	Water Fountain 15 min. Follow up Flush Sample - Collected day before First Draw Sampling (ppb)	First Draw (ppb)	Follow up Flush - Collected 30 seconds after First Draw Sampling (ppb)	Description	First Draw (ppb) (See note 2)
SAMPLING DATE			5/16/2019			mm/dd/yyyy	mm/dd/yyyy	mm/dd/yyyy	mm/dd/yyyy	
RESULTS DATE			6/5/2019			mm/dd/yyyy	mm/dd/yyyy	mm/dd/yyyy	mm/dd/yyyy	

Table 2. Summary Statistics

CATEGORY	INITIAL SAMPLING RESULTS	RE-SAMPLING RESULTS			POST REMEDIATION RESULTS
	Recommended Level = 15 ppb				
	First Draw (ppb)	Water Fountain Follow up Flush Sample - Collected day before First Draw Sampling (ppb)	First Draw (ppb)	Follow up Flush - Collected 30 seconds after First Draw Sampling (ppb)	First Draw (ppb)
Total Drinking	2	0	0	0	0
Total Drinking >15 ppb	0	0	0	0	0
Total Cook/Brush	1	0	0	0	0
Total Cook/Brush >15 ppb	0	0	0	0	0
Total Washing	4	0	0	0	0
Total Washing >15 ppb	0	0	0	0	0
Total Samples	7	0	0	0	0
Total Samples >15 ppb	0	0	0	0	0

Priority Areas Lead Testing and Corrective Actions May 2019
NAS CORPUS CHRISTI Play Areas

Table 1. Summary of Results

SAMPLING LOCATION DESCRIPTION			INITIAL SAMPLING RESULTS			RE-SAMPLING RESULTS			CORRECTIVE ACTIONS	POST REMEDIATION SAMPLING RESULTS		
			First Draw (ppb)	Retest required?	Date Fixture Secured? (See Note 1)	Recommended Level = 15 ppb				First Draw (ppb) (See note 2)	Follow up Flush - Collected 30 seconds after First Draw Sampling (ppb)	
Water Fountain 15 min. Follow up Flush Sample - Collected day before First Draw Sampling (ppb)	First Draw (ppb)	Follow up Flush - Collected 30 seconds after First Draw Sampling (ppb)				Description		Recommended Level = 15 ppb				
CATEGORY Water Intended For:	SAMPLE ID	Outlet Description	5/16/2019			mm/dd/yyyy	6/13/2019	6/13/2019				
			6/4/2019			mm/dd/yyyy	6/19/2019	6/19/2019				9/5/2019
DRINKING	CC-PLAY-ALPHA-WFBCOMB-FD (OPA-2)	Softball Field Alpha - Water fountain portion of combo.		NO	N/A	N/A	N/A	N/A			N/A	N/A
DRINKING	CC-PLAY-BRAVO-WFCOMB-FD (OPA-4)	Softball Field Bravo - Water fountain portion of combo.	13	NO	N/A	N/A	N/A	N/A			N/A	N/A
COOKING	CC-PLAY-WALDRON-K-A-FD (OPA-14)	Kitchen faucet in Waldron sports field concession stand	Non Detect									
COOKING	CC-PLAY-WALDRON-K-B-FD (OPA-18)	Kitchen faucet in Waldron sports field concession stand	1.8									
WASHING	CC-PLAY-ALPHA-HOSE-FD (OPA-1)	Softball Field Alpha - Hose Bib	2	NO	N/A	N/A	N/A	N/A			N/A	N/A
WASHING	CC-PLAY-ALPHA-HOSECOMB-FD (OPA-3)	Softball Field Alpha - Hose bib portion of combo.		NO	N/A	N/A	N/A	N/A			N/A	N/A
WASHING	CC-PLAY-BRAVO-HOSECOMB-FD (OPA-5)	Softball Field Bravo - Hose bib portion of combo.	16	Yes	6/5/2019	N/A	8.1	2.7	Fixture replaced on 8/21/19.		6.8	N/A
WASHING	CC-PLAY-WALDRON-HOSE-A-FD (OPA-6)	Hose bib in Waldron sports field	1.6	NO	N/A	N/A	N/A	N/A			N/A	N/A
WASHING	CC-PLAY-WALDRON-HOSE-B-FD (OPA-7)	Hose bib in Waldron sports field	4.1	NO	N/A	N/A	N/A	N/A			N/A	N/A
WASHING	CC-PLAY-WALDRON-HOSE-C-FD (OPA-8)	Hose bib in Waldron sports field	Non Detect	NO	N/A	N/A	N/A	N/A			N/A	N/A
WASHING	CC-PLAY-WALDRON-HOSE-D-FD (OPA-9)	Hose bib in Waldron sports field	1.6	NO	N/A	N/A	N/A	N/A			N/A	N/A
WASHING	CC-PLAY-WALDRON-HOSE-E-FD (OPA-10)	Hose bib in Waldron sports field	8	NO	N/A	N/A	N/A	N/A			N/A	N/A
WASHING	CC-PLAY-WALDRON-HOSE-F-FD (OPA-11)	Hose bib in Waldron sports field	1.5	NO	N/A	N/A	N/A	N/A			N/A	N/A
WASHING	CC-PLAY-WALDRON-HOSE-G-FD (OPA-12)	Hose bib in Waldron sports field	Non Detect	NO	N/A	N/A	N/A	N/A			N/A	N/A
WASHING	CC-PLAY-WALDRON-HOSE-H-FD (OPA-13)	Hose bib in Waldron sports field	Non Detect	NO	N/A	N/A	N/A	N/A			N/A	N/A
WASHING	CC-PLAY-WALDRON-HOSE-I-FD (OPA-15)	Hose bib in Waldron sports field	16	Yes	6/5/2019	N/A	11.0	0.58	Fixture replaced on 8/22/19. Additional flushing being performed after corrective action to further reduce lead level.		15	N/A

Priority Areas Lead Testing and Corrective Actions May 2019
NAS CORPUS CHRISTI Play Areas

SAMPLING LOCATION DESCRIPTION			INITIAL SAMPLING RESULTS			RE-SAMPLING RESULTS			CORRECTIVE ACTIONS	POST REMEDIATION SAMPLING RESULTS	
CATEGORY Water Intended For:	SAMPLE ID	Outlet Description	First Draw (ppb)	Retest required?	Date Fixture Secured? (See Note 1)	Recommended Level = 15 ppb				Description	First Draw (ppb) (See note 2)
						Water Fountain 15 min. Follow up Flush Sample - Collected day before First Draw Sampling (ppb)	First Draw (ppb)	Follow up Flush - Collected 30 seconds after First Draw Sampling (ppb)			
SAMPLING DATE			5/16/2019			mm/dd/yyyy	6/13/2019	6/13/2019			9/5/2019
RESULTS DATE			6/4/2019			mm/dd/yyyy	6/19/2019	6/19/2019			9/10/2019
WASHING	CC-PLAY-WALDRON-HOSE-J-FD (OPA-16)	Hose bib in Waldron sports field	16	Yes	6/5/2019	N/A	15.0	0.24	Fixture replaced on 8/22/19.	6.7	N/A
WASHING	CC-PLAY-WALDRON-HOSE-K-FD (OPA-17)	Hose bib in Waldron sports field	Non Detect	NO	N/A	N/A	N/A	N/A		N/A	N/A

Notes:

¹ Affected outlets were immediately secured after receiving verbal communication from the lab on results exceeding the recommended level of 15 ppb. on 9/5/19 and final results did not exceed recommended level of 15 ppb.

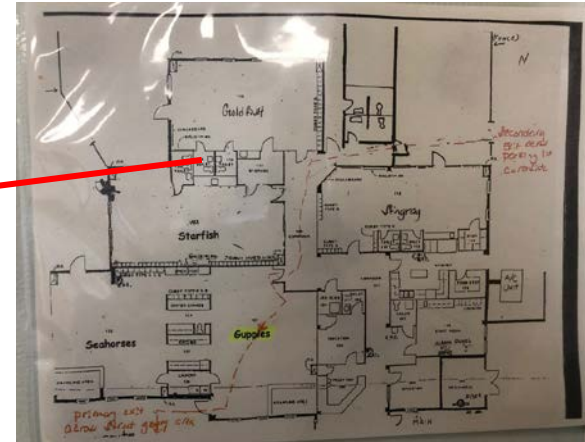
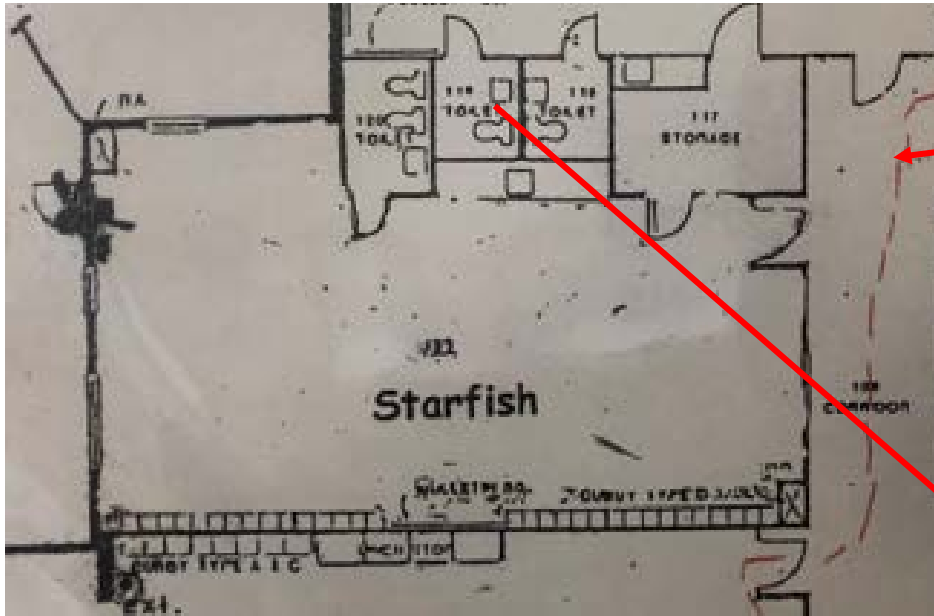
² Post-remediation sampling was conducted

Priority Areas Lead Testing and Corrective Actions May 2019
NAS CORPUS CHRISTI Play Areas

SAMPLING LOCATION DESCRIPTION			INITIAL SAMPLING RESULTS			RE-SAMPLING RESULTS			CORRECTIVE ACTIONS	POST REMEDIATION SAMPLING RESULTS	
CATEGORY Water Intended For:	SAMPLE ID	Outlet Description	Recommended Level = 15 ppb							Recommended Level = 15 ppb	
			First Draw (ppb)	Retest required?	Date Fixture Secured? (See Note 1)	Water Fountain 15 min. Follow up Flush Sample - Collected day before First Draw Sampling (ppb)	First Draw (ppb)	Follow up Flush - Collected 30 seconds after First Draw Sampling (ppb)	Description	First Draw (ppb) (See note 2)	Follow up Flush - Collected 30 seconds after First Draw Sampling (ppb)
SAMPLING DATE			5/16/2019			mm/dd/yyyy	6/13/2019	6/13/2019			9/5/2019
RESULTS DATE			6/4/2019			mm/dd/yyyy	6/19/2019	6/19/2019			9/10/2019

Table 2. Summary Statistics

CATEGORY	INITIAL SAMPLING RESULTS		RE-SAMPLING RESULTS		POST REMEDIATION RESULTS
	Recommended Level = 15 ppb				
	First Draw (ppb)	Water Fountain Follow up Flush Sample - Collected day before First Draw Sampling (ppb)	First Draw (ppb)	Follow up Flush - Collected 30 seconds after First Draw Sampling (ppb)	First Draw (ppb)
Total Drinking	1	0	0	0	0
Total Drinking >15 ppb	0	0	0	0	0
Total Cook/Brush	2	0	0	0	0
Total Cook/Brush >15 ppb	0	0	0	0	0
Total Washing	13	0	3	3	3
Total Washing >15 ppb	3	0	0	0	0
Total Samples	16	0	3	3	3
Total Samples >15 ppb	3	0	0	0	0



CC-1782-RM122-RM-LHWP-FD (BLDG 1782-16)



CC-PLAY-BRAVO-HOSECOMB-FD (OPA-5)

OPA-5 LIPA Exceedance Location

LIPA Sampling Support 2019
NAS Corpus Christi

Figure 2



CC-PLAY-WALDRON-HOSE-I-FD (OPA-15)



WALDRON Field

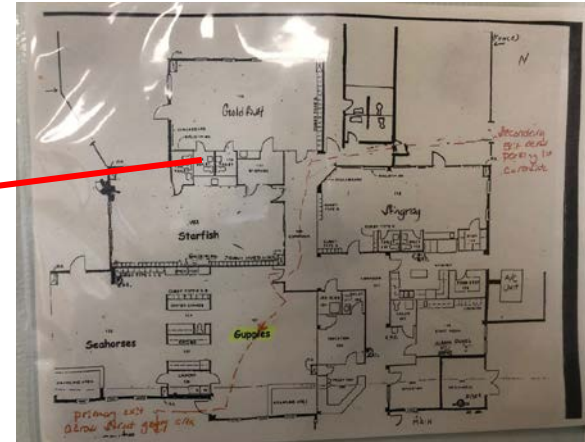
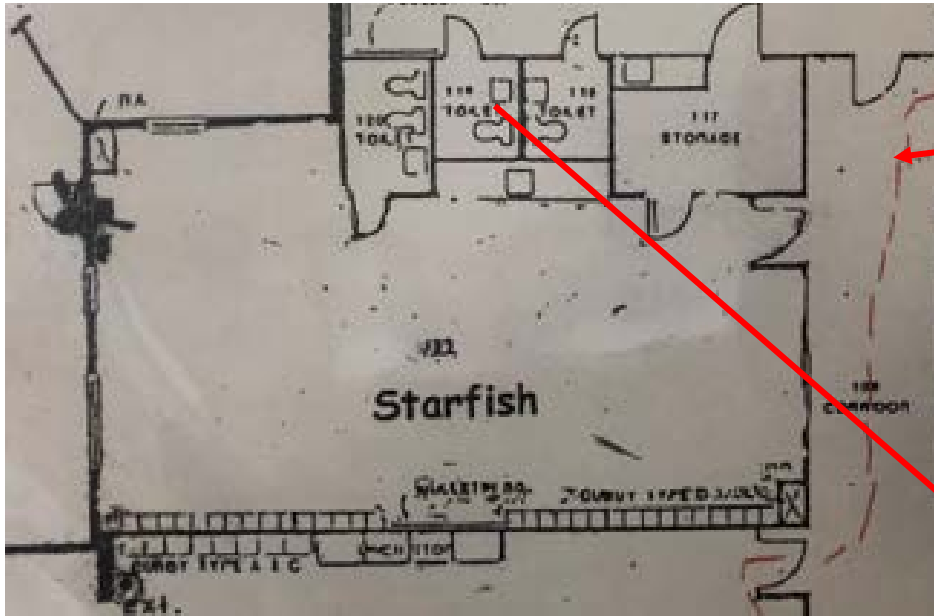
CC-PLAY-WALDRON-HOSE-J-FD (OPA-16)

OPA-15 and OPA-16 LIPA Exceedance Locations

LIPA Sampling Support 2019
NAS Corpus Christi

Figure 3





CC-1782-RM122-RM-LHWP-FD (BLDG 1782-16)



CC-PLAY-BRAVO-HOSECOMB-FD (OPA-5)

OPA-5 LIPA Exceedance Location

LIPA Sampling Support 2019
NAS Corpus Christi

Figure 2



CC-PLAY-WALDRON-HOSE-I-FD (OPA-15)



CC-PLAY-WALDRON-HOSE-J-FD (OPA-16)



WALDRON Field

OPA-15 and OPA-16 LIPA Exceedance Locations

LIPA Sampling Support 2019
NAS Corpus Christi

Figure 3



AH Environmental Consultants